



## 2021-2022 CEC Rules Amendments

### Introduction

Climbing Escalade Canada (CEC) is Canada's National Federation member of the International Federation of Sport Climbing (IFSC). As such, CEC endorses and implements all IFSC Rules, except for the changes outlined in this document. From time to time, CEC reserves the right to make amendments to the IFSC Rules that would address some specific situations in the Canadian environment. The current 2021-2022 Amendments are presented in this document.

This document has been prepared by:

- [CEC Competition Committee](#)
- CEC Safe Sport & Events Coordinator
- CEC High Performance Director
- CEC Executive Director

The 2021-2022 CEC Rules Amendments have been approved by the CEC Board of Directors on October 26, 2021.

### IFSC Rules

This CEC Rules Amendment document should be read in conjunction with the latest version of the IFSC Rules, as outlined below:

- [IFSC Rules 2021 v1.7.6 \[updated May 24, 2021\]](#)
- [Addendum to IFSC Rules v1.8 \(to be used during the COVID-19 pandemic\) \[updated July 05, 2021\]](#)

### CEC-Sanctioned Events

Unless otherwise specified on the CEC Website, the 2021-2022 CEC-Sanctioned events are as follow:

- **2021 North American Cup Series (see [2021 Events Manual](#))**
  - Lead/Speed, October 8-10, 2021, Richmond, BC
  - Boulder, October 23-24, 2021, Kanata, ON
- **2021-2022 CEC Senior Combined Series**
  - Boulder, National Championships, November 27-28, 2021, Québec City, QC
  - Lead, National Championships, February 19-21, 2022, Richmond, BC
- **2021-2022 CEC Speed Series**
  - Speed, National Championships, February 19-21, 2022, Richmond, BC
- **2021-2022 CEC Youth Combined Series**
  - Boulder/Lead Regional Events, April 15-17, 2022
  - Boulder/Lead National Championships, May 19-23, 2022, Laval and La Prairie, QC

### **Overview of important 2021-2022 Changes**

- Added Head belayer and Belayers to the list of officials.
- We will not be doing any competitions with 2 starting groups for the 2021/22 season due to the lack of a robust ranking system with no competitions in the past 1.5 years.
- Re-introduction of quotas to finals and semi finals to be based on number of registrations instead of a fixed quota. This will allow there always to be a cut down.
- Starting orders for Senior will be based on the Continuous National Ranking (CNR).
- Starting orders for Youth will be based on Provincial rankings.

## PART 1 - GENERAL

### 1. INTERNATIONAL FEDERATION OF SPORT CLIMBING & CLIMBING ESCALADE CANADA (IFSC p.12-15)

#### Introduction

CEC Members are the Provincial and Territorial Sport Organizations (PTSOs). As of January 2021, these are the recognized members of CEC:

- Sport Climbing British Columbia (SCBC)
- Alberta Climbing Association (ACA)
- Ontario Climbing Federation (OCF)
- Fédération Québécoise de la Montagne et de l'Escalade (FQME)
- Climb Yukon (CY)
- Alpine Club of Canada (ACC)

In provinces or territories where there are no recognized PTSOs, CEC will conduct athlete selection and qualification directly.

#### Competition Officials

The CEC Competition Officials are as follows. Their roles and duties are the same as outlined in the IFSC Rules. CEC is responsible for appointing, endorsing, and training all Officials at CEC-Sanctioned Events, unless specified otherwise.

- CEC Technical Delegate
- Jury President
- Head Judge
- Judges\*
- Head Belayer
- Belayers\*
- Head Routesetter
- Assistant Routesetter
- Setters

*\*Judges and Belayers are recruited by the local organization committee. Judges are trained online through the "Introduction to Judging in Competition Climbing" e-Learning Module.*

### 2. MEMBER FEDERATIONS (IFSC p.16-19)

#### Registration of teams

CEC doesn't conduct "Team Registrations". Participants and Coaches will register directly on the [CEC Registration System](#). PTSOs are responsible for endorsing athletes and coaches through the CEC Qualification Process outlined.

#### International licenses

Athletes and Coaches must be CEC licensed participants. Licenses are valid from September 1 to August 31st. Athletes and Coaches must abide by all [CEC Rules and Policies](#) as adopted and revised from time to time by the CEC Board of Directors.

#### Fees

All Licenses payment and Event Registrations payments are to be made directly to CEC, through the [CEC Registration System](#).

### 3. GENERAL RULES (IFSC p.20-24)

#### **Disciplines**

CEC adopts the IFSC discipline as outlined in the rules, with addition of top-rope to 3.1 A)

3.1 A) Lead, in which competitors are ranked based on their progression on one or two routes. Youth C Competitors will compete on an in-situ rope (on “Top-Rope”).

#### **The Competition Area**

Addition of smoking ban to 3.10

3.10 Smoking of any substance is not allowed in any competition areas. This includes tobacco and marijuana, as well as the use of e-cigarettes and vaping devices.

#### **Clothing and Equipment**

Addition of requirement to wear a shirt to 3.14 D)

3.14 D) Competitors must wear a top at all times when in the competition area.

#### **Team Uniforms**

CEC currently doesn't have requirements in place for uniforms.

#### **Ranking and records**

CEC has adopted a [Continuous National Ranking \(CNR\)](#) to rank Canadian Athletes. Please refer to the CEC website for more information and to consult the up to date ranking.

### 4. DISCIPLINARY PROCEDURES (IFSC p.25-27)

#### **Introduction**

CEC will track Yellow and Red Cards issued at all CEC-Sanctioned Events. It is the responsibility of the Jury President to report such information to the CEC Technical Delegate.

[CEC Rules and Policies](#) are complementary to this section of the IFSC Rules. Athletes, coaches, officials, and all stakeholders at events must be aware of the CEC Policies, including, but not limited to, the Community Code of Conduct, Discipline and Complaints Policy, and the Appeal Policy.

### 5. ANTI DOPING (IFSC p.28)

#### **Adoption**

CEC has adopted the [Canadian Center for Ethics in Sport \(CCES\) 2021 Canadian Anti-Doping Program \(CADP\)](#). The CADP rules take precedence over the World Anti-Doping Code when applied to CEC-Sanctioned Events.

### 6. APPEALS (IFSC p.29-31)

#### **General**

The 2021-2022 CEC Appeal Fee and CEC Appeal Form are available on the [CEC Website under Competition Resources](#).

**PART 2 - DISCIPLINE RULES**

**7. LEAD (IFSC p.33-42)**

**General**

Modification to minimum length from 15m down to 14m in 7.1 A) 1)

7.1 Lead competitions shall:

- A) take place on purpose-designed, artificial climbing walls having a minimum height of 12 metres, and permitting the construction of routes:
  - 1) with a minimum length of 14 metres

**Safety**

Addition of frequency of changes of the rope to 7.3 B)

7.3 The Jury President

- B) shall decide whether the climbing rope should be replaced at any time during a competition.
- C) shall decide the frequency with which the rope is changed.

Addition of top-rope considerations to 7.5

7.5 The climbing rope shall be controlled from the ground by one (1) belayer for each rope, preferably assisted by a second person. Youth C and D competitors will use a top-rope route, attempted with an in-situ rope (on 'Top-Rope')

**Observation procedure**

Addition to 7.14 - availability and use of streaming services

7.14 Observation:

- A) each Qualification route shall be demonstrated by forerunners:
  - 1) on a video recording continuously played back in the Warm-Up Area or/and available on a streaming service, starting no later than 60 minutes before the scheduled start of the round;

**CEC Specific Addition: Quotas to Semis and Finals**

The quotas for the Semi-Final and Final round shall be as follows:

A) if there are two Starting Groups in any Category, the quota for the next round shall be equally divided and applied to both groups.

B) the quota for each successive round shall be filled with the highest ranked competitors from the previous round. If the quota is exceeded as a result of ties, all tied competitors shall qualify.

All CEC Events (Senior and Youth)

LEAD QUOTAS		
Qualifier	Semi	Final
36+	26	8
32-35	24	8
28-31	21	8

24-27	18	8
20-23	15	8
16-19	12	8
12-15	10	8
11 or fewer	no semi	8

\*For Regional Events, there will be no Semi-Finals, regardless of the number of participants.

Qualifier	Semi	Final
36+	no semi	20
32-35	no semi	18
28-31	no semi	16
24-27	no semi	14
20-23	no semi	12
15-19	no semi	10
14 or fewer	no semi	8

## 8. **BOULDER (IFSC p.43-51)**

### **General**

Modification of 8.2 to add requirements per categories

#### 8.2 Design of boulders:

##### A) Each boulder shall be designed:

- 1) to limit that a fall may injure the competitor or any third party, or obstruct any other competitor;
- 2) without any downward jumps;
- 3) so that the lowest part of the body in the final position (as anticipated by the head routesetter) should not be higher than 'x' meters above the safety matting, were 'x' is defined as:
  - a) Youth C - 2.5
  - b) Youth B - 2.75
  - c) Youth A, Junior, Open - 3

### **CEC Specific Addition: Quotas to Semis and Finals**

The quotas for the Semi-Final and Final round shall be as follows:

A) if there are two Starting Groups in any Category, the quota for the next round shall be equally divided and applied to both groups.

B) the quota for each successive round shall be filled with the highest ranked competitors from the previous round. If the quota is exceeded as a result of ties, all tied competitors shall qualify.

All CEC Events (Senior and Youth)

BOULDER QUOTAS		
Qualifier	Semi	Final
27+	20	6
24-26	18	6
20-23	15	6
16-19	12	6
12-15	9	6
11 or fewer	no semi	6

\*For Regional Events, there will be no Semi-Finals, regardless of the number of participants.

Qualifier	Semi	Final
36+	no semi	20
32-35	no semi	18
28-31	no semi	16
24-27	no semi	14
20-23	no semi	12
15-19	no semi	10
11-14	no semi	8
10 or fewer	no semi	6

**CEC Specific Addition: Starting Orders**

For the 2021-2022 Season, the Starting Orders will be determined as follows:

- A) National Event
  - a) For Senior National Events: each qualification group will be determined as follow:
    - i) First, competitors with a CNR placement will be ranked in descending order up to position 20 only;
    - ii) Next, all other competitors will be ranked in random order
  - b) For Youth National Events: each qualification group will be determined based on regional rankings as follow:
    - i) Using the regional results from Western and Eastern regional, complete this table:

Qualification Group A	Qualification Group B
1E	1W
2W	2E
3E	3W

4W	4E
continue until end of ranking	

- ii) When all athletes from one regional have been allocated to a group, the remainder of athletes from the other regional will be split equally between the two groups, continuing the “snake” format between group A and B.

B) Regional Event:

- a) Youth: using the provided provincial rankings:
  - i) All first place athletes will be assigned position 1 to x in a randomised manner (e.g. if there are 4 provincial athletes ranked #1, they will be assigned to position 1 to 4 randomly, then all athletes ranked #2 will be randomly assigned following positions)
  - (a) This method will go through to PTSO rank #5 only, after, all remaining athletes will be ranked randomly.

**9. SPEED (IFSC p.52-59)**

**Format**

Modification to 9.1 Format to allow for 10m walls for Youth C and D

9.1. Format: Speed competitions shall:

- A) take place:
  - a) on artificial structures designed to the specification set out in the IFSC Speed License Rules, as follow:
    - i) The Official 15m IFSC Speed route will be used for Youth B, Youth A, Junior, and Open.
    - ii) The Official 10m CEC Youth Speed Route will be used for Youth C and D.
  - b) Using an automatic timing system approved by the CEC, or a Mechanical-Electrical Timing system approved by the CEC when automatic timing system is not available.

**Canadian Records**

Modification to 9.2 to recognize Canadian Records in multiple categories.

9.2 The CEC recognises the following National Records for the following male and female categories:

- B) Open - 15m
- C) Junior - 15m
- D) Youth A - 15m
- E) Youth B - 15m

9.2.1 Current Canadian Records can be found on the CEC Website here:

<https://www.climbingcanada.ca/hp-results/>



### **Canadian Records**

Modification to 9.3 to recognize when and where a Canadian Record can be established.

9.3 A Canadian record may be set only during scoring races (i.e. not during any practice period or any race which is abandoned or cancelled) and where:

- A) the climbing surface, holds, timing system and autobelay system have been certified by the CEC to meet the requirements for a Canadian Record;
- B) the competition is part of a CEC-sanctioned Event;
- C) a Jury President has been appointed by CEC.

### **Late Withdrawal**

Addition of 9.0 Late Withdrawal Clause.

9.0 Late Withdrawal

- A) an athlete who withdraws from speed competition after registration may receive a yellow card. The decision of which is up to the Jury President.

## **10. TEAM SPEED (IFSC p.59)**

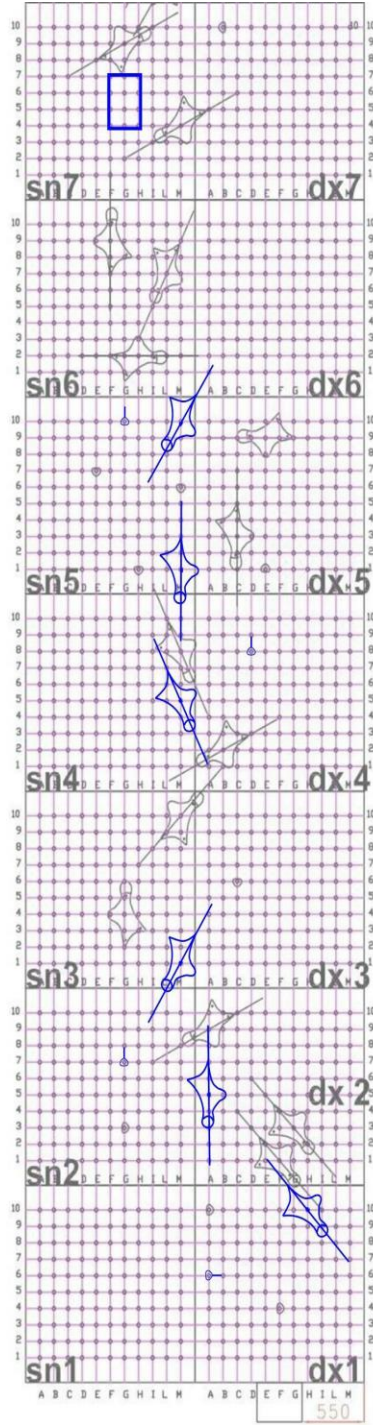
**No CEC Amendments in this section.**

## **11. COMBINED (IFSC p.60 to 65)**

**No CEC Amendments in this section.**

**RESOURCES**

CEC Official Youth C/D Speed Route



Youth C/D modified speed route V2  
Modified route created by Simon Parton  
Original map from the IFSC Rules

starting device